

## A Spectrum of *ABCC6* Mutations Is Responsible for Pseudoxanthoma Elasticum

Olivier Le Saux,<sup>1</sup> Konstanze Beck,<sup>1</sup> Christine Sachsinger,<sup>1</sup> Chiara Silvestri,<sup>1,2</sup> Carina Treiber,<sup>1</sup> Harald H. H. Göring,<sup>3</sup> Eric W. Johnson,<sup>4</sup> Anne De Paepe,<sup>5</sup> F. Michael Pope,<sup>6</sup> Ivonne Pasquali-Ronchetti,<sup>2</sup> Lionel Bercovitch,<sup>7</sup> Sharon Terry,<sup>8</sup> and Charles D. Boyd<sup>1</sup>

<sup>1</sup>Pacific Biomedical Research Center, University of Hawai'i, Honolulu; <sup>2</sup>Department of Biomedical Sciences, University of Modena, Modena, Italy; <sup>3</sup>Department of Genetics, Southwest Foundation for Biomedical Research, San Antonio; <sup>4</sup>Barrow Neurological Institute, Phoenix; <sup>5</sup>Center for Medical Genetics, University Hospital, Ghent, Belgium; <sup>6</sup>MRC Connective Tissue Genetics Group, Institute of Medical Genetics, University Hospital of Wales, Cardiff, United Kingdom; <sup>7</sup>Department of Dermatology, Brown Medical School, Providence, RI; and <sup>8</sup>PXE International, Inc., Sharon, MA

To better understand the pathogenetics of pseudoxanthoma elasticum (PXE), we performed a mutational analysis of *ATP-binding cassette subfamily C member 6 (ABCC6)* in 122 unrelated patients with PXE, the largest cohort of patients yet studied. Thirty-six mutations were characterized, and, among these, 28 were novel variants (for a total of 43 PXE mutations known to date). Twenty-one alleles were missense variants, six were small insertions or deletions, five were nonsense, two were alleles likely to result in aberrant mRNA splicing, and two were large deletions involving *ABCC6*. Although most mutations appeared to be unique variants, two disease-causing alleles occurred frequently in apparently unrelated individuals. R1141X was found in our patient cohort at a frequency of 18.8% and was preponderant in European patients. *ABCC6*del23–29 occurred at a frequency of 12.9% and was prevalent in patients from the United States. These results suggested that R1141X and *ABCC6*del23–29 might have been derived regionally from founder alleles. Putative disease-causing mutations were identified in ~64% of the 244 chromosomes studied, and 85.2% of the 122 patients were found to have at least one disease-causing allele. Our results suggest that a fraction of the undetected mutant alleles could be either genomic rearrangements or mutations occurring in noncoding regions of the *ABCC6* gene. The distribution pattern of *ABCC6* mutations revealed a cluster of disease-causing variants within exons encoding a large C-terminal cytoplasmic loop and in the C-terminal nucleotide-binding domain (NBD2). We discuss the potential structural and functional significance of this mutation pattern within the context of the complex relationship between the PXE phenotype and the function of *ABCC6*.

### Introduction

Pseudoxanthoma elasticum (PXE [MIM 177850 and MIM 264800]) is a heritable disorder characterized by dermal, vascular, and ocular lesions that result from the accumulation of morphologically abnormal and mineralized elastic fibers in these tissues (Uitto and Shamban 1987). The skin manifestations are the most prevalent characteristic of PXE and generally are the first physical signs of the developing disorder. These skin changes are often detected during childhood or adolescence, and they progress slowly and unpredictably during adulthood. The accumulation of abnormal calcified elastic fibers in

the middermis produces typical skin lesions, which consist of yellowish papules and plaques and of laxity with loss of elasticity. These lesions are primarily seen on the neck, axilla, antecubital fossa, groin, and periumbilical area (Uitto and Shamban 1987; Neldner 1988; Uitto et al. 1998). The diagnosis of PXE is confirmed histologically by the demonstration, in biopsies of lesional skin, of fragmented calcified elastic fibers, by use of the Verhoeff–van Gieson and von Kossa stains. Similar elastic fiber changes within the internal elastic lamina of medium-sized arteries are most frequently associated with intimal fibroplasia and early onset of peripheral vascular occlusive disease (Nishida et al. 1990; Lebwohl et al. 1993). Retinal angioid streaks, the other hallmark of PXE, result from fragmentation and calcification of the elastic component of the Bruch's membrane. Angioid streaks are associated with subretinal neovascularization and hemorrhage, which can lead to disciform scarring and severe loss of central vision (Weenink et al. 1996). In addition to elastic fiber alterations, the abnormal deposition of several other extracellular matrix components,

Received June 20, 2001; accepted for publication August 8, 2001; electronically published August 31, 2001.

Address for correspondence and reprints: Dr. Charles D. Boyd, Laboratory of Matrix Pathobiology, the Pacific Biomedical Research Center, University of Hawai'i, 1993 East-West Road, Honolulu, HI 96822. E-mail: cbkc08901@aol.com

© 2001 by The American Society of Human Genetics. All rights reserved. 0002-9297/2001/6904-0009\$02.00

such as collagen fibrils and proteoglycan, has also been demonstrated in tissue from patients with PXE (Baccarani-Contri et al. 1996; Passi et al. 1996).

PXE was first observed in 1881 (Rigal 1881) but was not formally identified as a heritable disorder until 1896 (Darier 1896). Despite an abundant literature after these initial reports, particularly in the last two decades, the genetic basis of PXE remained entirely unknown until recently. The PXE gene was first mapped to a 3–5-cM locus at 16p13.1 (Struk et al. 1997; van Soest et al. 1997). This locus was then refined to a region of ~500 kb (Le Saux et al. 1999; Cai et al. 2000) that contains five candidate genes. Mutational analysis of all these candidate genes led several groups to identify the first mutations responsible for PXE in a gene that encodes an ATP-binding cassette (ABC) subfamily C member 6 (*ABCC6*) transporter, also known as “multidrug resistance-associated protein 6” or MRP6 (Bergen et al. 2000; Germain et al. 2000; Le Saux et al. 2000; Ringpfeil et al. 2000; Struk et al. 2000). *ABCC6* consists of 31 exons spanning ~75 kb and encodes a 165-kD transmembrane protein. The *ABCC6* gene is predominantly expressed in both the liver and kidney. In a recent study, *ABCC6* has been localized to the basolateral surface of hepatocytes (Madon et al. 2000). Although *ABCC6* is a typical ABC transporter, we do not yet know what molecule(s) this transmembrane protein transports. Similarly, the relationship between aberrant *ABCC6* activity and extracellular changes in PXE tissues remains to be elucidated.

To date, a limited number of apparently recurrent and unique mutations of *ABCC6* have been identified in unrelated patients with PXE. To ascertain whether these preliminary findings are indicative of a larger spectrum of *ABCC6* mutations and to determine, in particular, whether the nature of these mutations may provide any indication of the relationship of *ABCC6* function to the PXE phenotype, we performed a mutational analysis (described in the present article) of *ABCC6* in 122 unrelated patients with PXE, the largest cohort of such patients yet studied, as a prerequisite to an elucidation of the pathogenic mechanisms of PXE.

## Patients, Material, and Methods

### Patients

DNA samples from patients examined in the present study were collected in the United Kingdom by F.M.P., in the United States and South Africa by S.T. and L.B. (on behalf of PXE International, Inc.), in Italy and Germany by I.P.R., and in Belgium by A.D.P. The diagnosis of PXE in all unrelated patients was consistent with consensus criteria reported elsewhere (Christiano et al. 1992). The affected status of a patient was determined on the basis of examinations of dermal lesions

and the presence of ocular and/or cardiovascular findings, and the status was confirmed by the observation of calcified elastic fibers during histologic examination of a skin biopsy specimen treated with von Kossa stain. Genomic DNA obtained from a panel of 100 unrelated and unaffected individuals was used for control purposes. The panel comprised white individuals with origins in Europe or the United States. All blood samples were obtained from unaffected individuals and from patients who gave informed consent according to protocols approved by the appropriate institutional review board (or equivalent committee for human subjects in countries other than the United States). Genomic DNA was isolated from EDTA-anti-coagulated whole blood and was purified with a QIAamp blood kit (Qiagen), according to the manufacturer's instructions. Purified DNA was stored at  $-80^{\circ}\text{C}$  in a mixture (pH 8.0) of 1 mM Tris-HCl and 0.1 mM EDTA.

### PCR and DNA Sequence Analysis

Intron-derived primers for PCR amplification of all 31 *ABCC6* exons were synthesized using sequence information obtained from BAC clone CIT987SK-A-962B4 (GenBank accession number U91318). Intron/exon boundaries were deduced from information available in the Institute for Genome Research database and by comparison with the *ABCC6* cDNA (GenBank accession number NM\_001171). Typical PCR reactions, which have been described elsewhere (Le Saux et al. 1999), were performed in the presence of [ $^{32}\text{P}$ ]-labeled primers in a 9700 thermocycler (PerkinElmer). PCR products were 150–550 bp and included complete intron/exon boundaries. Radioactive PCR products were analyzed either by single-stranded conformation polymorphism (SSCP) analysis (Orita et al. 1989) using MDE-PAGE (BioWhittaker Molecular Applications), according to the manufacturer's instructions, and by conformation-sensitive gel electrophoresis (CSGE) analysis, as described elsewhere (Ganguly et al. 1993). DNA conformers were eluted in water from gel slices and were reamplified and sequenced with the same primers used to generate the PCR products. Alternatively, PCR products were amplified directly from genomic DNA before sequencing. DNA sequence analysis was performed using ABI BigDye terminator cycle sequencing with an ABI 310 automated DNA sequencer. The information generated by the sequencer was analyzed using the ABI Prism genetic analyzer software, version 1.2.2. The Sequencher 3.1 program was used to identify variations between the sequences of putative mutations and control DNA.

### Definition of Disease-Associated Alleles

For the purposes of this study, we have defined a sequence variant as phenotype-modifying (i.e., causative

of PXE) by using criteria described elsewhere for defining a nucleotide sequence variant as disease causing (Cotton and Scriver 1998): (1) *ABCC6* sequence variants predicted to result in nonsense or splice-site alterations were categorized as disease-associated alleles. These sequence variants included premature stop codons, small and large insertions/deletions resulting in a frameshift, and sequence alterations within *ABCC6* that had the potential to affect constitutive intron/exon splicing. To be considered as causative alleles, these sequence variants were required to be absent in a panel of 200 alleles from unaffected and unrelated control individuals. (2) Other potentially pathogenic nucleotide variants resulting in amino acid substitution were considered as disease-causing when (a) the substitution involved a conserved amino acid, (b) the variant was absent in a panel of 200 alleles of unaffected control individuals, and (c) the variant was shown to cosegregate with the PXE phenotype in available kindreds. Conserved amino acids were identified on the basis of an alignment of nine human *ABCC* proteins, performed with the ClustalW program. The term "mutation," in the present article, refers to a putative disease-causing allele defined according to these criteria. All exonic and intronic changes that did not meet these criteria were regarded as neutral or silent variants.

#### Haplotype Analysis

Microsatellite markers described elsewhere (Le Saux et al. 1999) were used for high-resolution mapping of chromosome 16p13.1. Each microsatellite was amplified by PCR, using primers end-labeled with  $\gamma$ [<sup>32</sup>P]-ATP. The radiolabeled PCR products were analyzed by autoradiography after electrophoresis on 6% polyacrylamide gels containing 6 M urea, 37.5% formamide, and a buffer containing 0.09 M Tris, 0.09 M boric acid, and 0.01 M EDTA. Electrophoresis was conducted at 80 W for 4–6 h, and gels were then dried and exposed to Fuji X-ray film at –80°C.

#### PCR Characterization of *Alu*-Mediated Deletions

The characterization of large deletions involving exon 15 and exons 23–29 of *ABCC6* was conducted using PCR amplification of the regions of interest, with primers positioned within flanking introns. The initial characterization of the deletions was performed with a combination of existing primers used to amplify the coding regions corresponding to exons 14, 16, 22, and 30. These primers were *ABCC6Ex14m*, 5'-AGG AAG CTG TTG CCA CAC at-3'; *ABCC6Ex16a*, 5'-GCG AGG AAG TGG GAC TTT CA-3'; *ABCC6Ex21m*, 5'-GCC TGA GGG TTA GGC ACA TA-3'; and *ABCC6Ex30a*, 5'-CAG GAC CCC TCC AGC TCT AA-3'. The primers used to determine the precise boundaries of these deletions were located 5' and 3' of *Alu* repeats in introns 14, 15, 22, and 29. The sequences of these primers were

*ABCC6IVS15a*, 5'-TGC TGA GGT TGA GAA ACC CA-3'; *ABCC6IVS14m*, 5'-GGC TAA GCC ATG AGA GCT TT-3'; *ABCC6IVS29a*, 5'-CTG TAG GCA GGT CAT TCA AA-3'; and *ABCC6IVS22m*, 5'-TCC CCT AAA GAT GGA GAG AT-3'.

## Results

### Mutational Screening and Analysis

*ABCC6* was screened in a cohort of 122 apparently unrelated patients with PXE from families with an autosomal recessive mode of inheritance of the PXE phenotype. Affected individuals originated from several European countries (Belgium, Germany, Holland, Italy, and the United Kingdom), South Africa, and the United States. All exons of *ABCC6* from patients and available unaffected relatives were amplified by PCR. The PCR products were analyzed by a combination of SSCP, heteroduplex scanning, and direct sequencing to detect single-base substitutions and small insertions/deletions. In this cohort of patients with PXE, we found a total of 36 different mutations according to our strict criteria (see Definition of Disease-Associated Alleles section). Among these, 8 mutations had been described elsewhere, and 28 mutations were novel. Mutations identified in the present study, together with previously published mutations, bring the total number of known PXE mutations to 43. This information is summarized in table 1.

### Mutation-Detection Rate

The overall detection rate of disease-causing sequence variants within the 244 chromosomes that we analyzed was 63.9%. The detection rate was slightly lower (58.9%) when patients from known consanguineous and Afrikaner families, for which a founder effect is suspected (Torrington and Viljoen 1991), were not included. The mutation-detection rate was 54.3% for the European cohort, 64.9% for the United States cohort (table 2), and 85.3% in patients of Afrikaner origin. Within the Afrikaner population, the mutation-detection rate was higher, because most alleles appear to be identical by descent (O.L.S., K.B., C.S., C.T., E.W.J., L.B., S.T., D.L.V., and C.D.B., unpublished data). In our cohort of 122 patients, 104 (85.2%) individuals were found to have at least one disease-causing allele. Of these, two *ABCC6* mutant alleles were detected in 52 patients, one allele was found in 52 patients, and no disease-associated allele could be identified in the 18 remaining subjects with PXE.

### PXE Mutations

The most-prevalent mutations detected in the *ABCC6* gene were missense substitutions (21 [58.3%] mutations,

**Table 1****ABCC6 Mutations in a Cohort of Patients with PXE**

CHANGE IN		STATUS <sup>a</sup>	ORIGIN(S) <sup>b</sup>	EXON(S) <sup>c</sup>	REFERENCE(S)
Amino Acid	Nucleotide				
...	179–195del	ht	Belgium	2	Present study
...	938–939insT	ch, ht	SA, UK	8	Present study
N411K	1233T→G	ht	US	10	Present study
A455P	1363G→C	Nd	Nd	11	Uitto et al. (2001)
R518Q	1553G→A	ch, ht	Belgium	12	Present study, Uitto et al. (2001)
F568S	1703T→C	ch	US	13	Present study
...	ABCC6del15	hm	SA	15	Present study
...	1944del22	ht	Holland	16	Bergen et al. (2000)
...	1995delG	ht	Germany	16	Present study
L673P	2018T→C	ch	SA	16	Present study
R765Q	2294G→A	ht	Germany	18	Present study
Y768X	2304C→A	ch, ht	SA	18	Present study
...	2322delC	ht	US	18	Present study
...	2542delG	Nd	Nd	19	Uitto et al. (2001)
...	IVS21+1G→T	ch	US, Germany	i-21	Present study, Uitto et al. (2001)
R1030X	3088C→T	ht	SA, UK	23	Present study
R1114P	3341G→C	hm	UK	24	Present study
S1121W	3362C→G	ch	Germany	24	Present study
R1138W	3412C→T	hm	Nd	24	Ringpfeil et al. (2000)
R1138P	3413G→C	ch	Germany	24	Present study
R1138Q	3413G→A	ch	UK, US	24	Present study, Ringpfeil et al. (2000)
R1141X	3421C→T	All	All	24	Present study and others <sup>d</sup>
R1164X	3490C→T	ch	Germany, UK	24	Ringpfeil et al. (2001)
G1203D	3608G→A	ch	Germany	25	Present study
...	IVS26-1G→A	ch	Belgium	i-26	Present study, Ringpfeil et al. (2000, 2001)
Q1237X	3709C→T	ch	Belgium	26	Present study
...	3775delT	ht, hm	SA, US, Holland	27	Present study, Bergen et al. (2000)
V1298F	3892G→T	ht	US	28	Present study
T1301I	3902C→T	ch	Belgium	28	Present study
G1302R	3904G→A	hm	US	28	Present study
A1303P	3907G→C	ch	Belgium	28	Present study
R1314W	3940C→T	hm	US	28	Present study
R1314Q	3941G→A	ch	Germany	28	Present study
G1321S	3961G→A	ht	US	28	Present study
R1339C	4015C→T	All	SA, US	28	Present study, Struk et al. (2000)
Q1347H	4041G→C	hm	US	28	Present study
D1361N	4081G→A	ch	Germany	29	Present study
...	4104delC	ch	Belgium	29	Present study
R1398X	4192C→T	ch	Belgium	29	Present study
...	ABCC6del23–29	ch	US	23–29	Present study, Ringpfeil et al. (2001)
...	4220insAGAA	ht	Holland	30	Bergen et al. (2000)
I1424T	4271T→C	ht	US	30	Present study
...	ABCC6del	ht	Holland	all	Bergen et al. (2000)

<sup>a</sup> Nd = not determined; hm = homozygote; ht = heterozygote; ch = compound heterozygote.

<sup>b</sup> UK = United Kingdom; US = United States; SA = South Africa; Nd = not determined.

<sup>c</sup> Exon indicates which exon(s) contains the mutation or is deleted by the mutation; i- = the intron that contains the mutation.

<sup>d</sup> Bergen et al. (2000), Germain et al. (2000), Struk et al. (2000), and Uitto et al. (2001).

see table 1). Other *ABCC6* mutant alleles included five (13.9%) nonsense and six (16.7%) frameshift mutations. Among these, four mutations involved the deletion of a single nucleotide, one mutation was an insertion of thymidine, and one mutation corresponded to the deletion of 17 bp. Two other mutations were predicted to affect constitutive exon/intron splicing of *ABCC6* pre-mRNA, and two large out-of-frame deletions of 1.6 kb

and 16.4 kb were characterized (these mutations are described in detail in the sections below). Each of the two splice-site mutations and each of the two deletion mutations each accounted for 5.6% of all mutations detected in the present study. Although most of the mutations reported here appear to be unique, a few disease-causing variants have been found to occur frequently in apparently unrelated individuals; R1141X was found at

**Table 2**  
**Frequencies of Mutant Alleles Found in a Cohort of 101 Unrelated Patients with PXE**

MUTATION <sup>a</sup>	OVERALL		EUROPE		UNITED STATES	
	No. of Alleles	Frequency (%)	No. of Alleles	Frequency (%)	No. of Alleles	Frequency (%)
R1141X	38	18.8	33	28.4	3	4.1
ABCC6del23–29	26	12.9	5	4.3	21	28.4
IVS21+1G→T	7	3.5	4	3.4	3	4.1
G1302R	4	2.0	0	.0	4	5.4
A1303P	4	2.0	3	2.6	1	1.4
R1314W	3	1.5	0	.0	3	4.1
R518Q*	3	1.5	1	.9	1	1.4
3775delT*	3	1.5	2	1.7	0	.0
R1138Q	2	1.0	1	.9	1	1.4
V1298F	2	1.0	0	.0	2	2.7
R1339C	2	1.0	0	.0	2	2.7
Q1347H	2	1.0	0	.0	2	2.7
4104delC*	2	1.0	1	.9	0	.0
179–195del	1	.5	1	.9	0	.0
938–939insT*	1	.5	0	.0	0	.0
N411K	1	.5	0	.0	1	1.4
F568S	1	.5	0	.0	1	1.4
1995delG	1	.5	1	.9	0	.0
R765Q	1	.5	1	.9	0	.0
2322delC	1	.5	0	.0	1	1.4
R1030X*	1	.5	0	.0	0	.0
R1114P	1	.5	1	.9	0	.0
S1121W	1	.5	1	.9	0	.0
R1138P	1	.5	1	.9	0	.0
G1203D	1	.5	1	.9	0	.0
IVS26–1G→A	1	.5	1	.9	0	.0
Q1237X	1	.5	1	.9	0	.0
W1241C	1	.5	1	.9	0	.0
T1301I	1	.5	1	.9	0	.0
R1314Q	1	.5	1	.9	0	.0
D1361N	1	.5	1	.9	0	.0
R1398X	1	.5	1	.9	0	.0
G1321S	1	.5	0	.0	1	1.4
I1424T	1	.5	0	.0	1	1.4
?	83	41.1	52	44.8	26	35.1
MDR	...	58.9	...	55.2	...	64.9

NOTE.—Forty-two alleles from founder-derived and consanguineous families are not included in this table. The total number of alleles represented is 202; 116 alleles were of European origin; 74 were of US origin; and 12 originated elsewhere.

<sup>a</sup> \* = Allele also found in a group of 12 non-European/non-United States alleles; ? = unknown allele; MDR = mutation-detection rate.

a frequency of 18.8%, and ABCC6del23–29 occurred at a frequency of 12.9% (table 2) in our cohort of patients. Of a total of 244 chromosomes, 42 were not taken into account in these calculations, because they were derived from consanguineous families or from the founder-derived Afrikaner population. Most individuals with two mutant alleles were compound heterozygotes. Interestingly, alleles R1141X and ABCC6del23–29 were found to occur at different frequencies when patient origin was considered. R1141X was far more frequently represented in the European cohort (33 [28.4%] of 116 alleles) than in the U.S. cohort of patients with PXE (3 [4.1%] of 74). Also, this nonsense mutation was une-

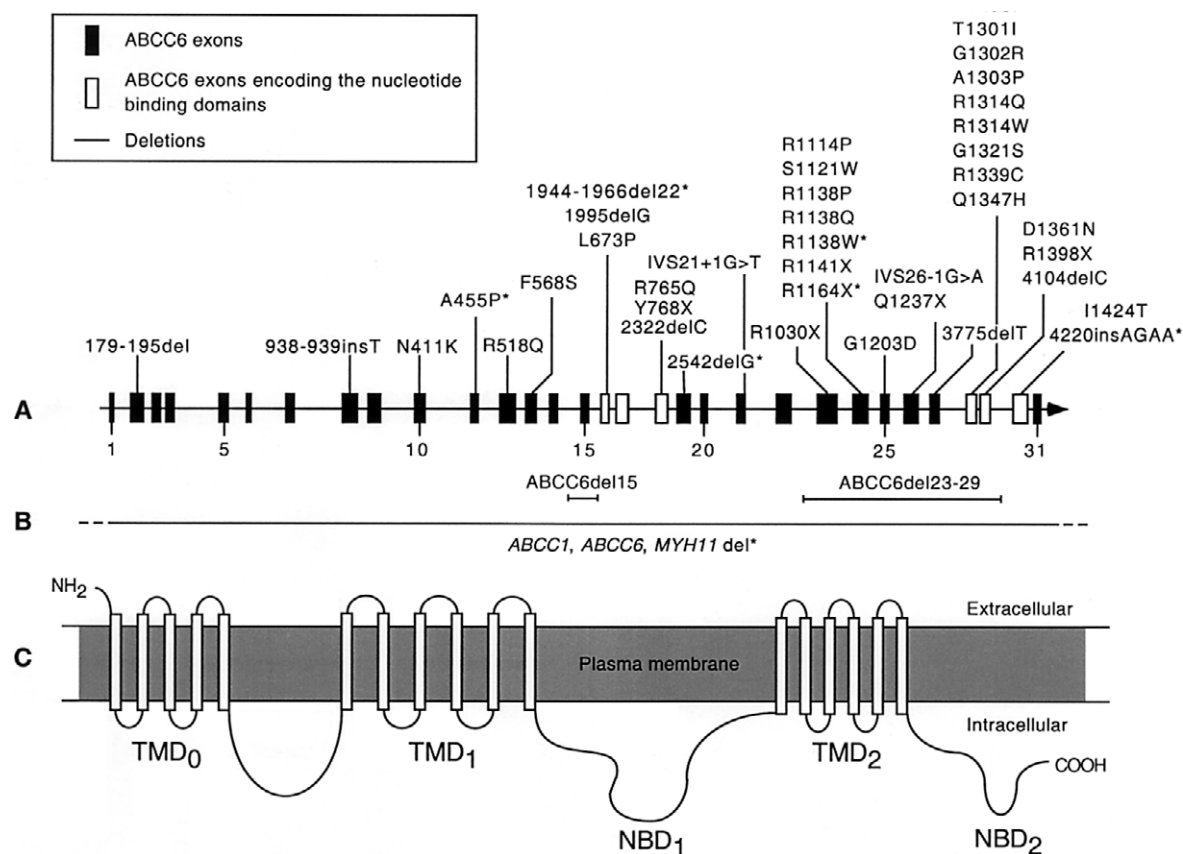
qually distributed among the European countries considered. Indeed, 15 of 26 Belgians, 8 of 15 Germans, 3 of 12 British, 2 of 6 Dutch, and 1 of 1 Italian carried an R1141X allele in a homozygous, compound heterozygous, or heterozygous state. In the U.S. cohorts, three patients carried a single R1141X allele. Among the South African patients, 2 of the 5 who were of British ancestry had the nonsense mutation in the heterozygous or compound heterozygous state, and 2 of the 17 of the Afrikaner patients carried a heterozygous or compound heterozygous R1141X. In contrast to the latter mutation, ABCC6del23–29 was found to represent nearly one-third (21 [28.4%] of 74 alleles) of the United States

alleles, whereas only 5 (4.3%) of 116 alleles analyzed among European patients with PXE were identified as *ABCC6*del23–29. The difference in frequency is statistically significant (Fisher's exact test;  $P = .0004$  and  $.0014$ , respectively). The frequency of individuals homozygous for these two frequently occurring disease-causing alleles (R1141X and *ABCC6*del23–29) was observed to be in Hardy-Weinberg equilibrium in the European and United States cohorts, respectively.

When previously published mutations and those reported in the present study are taken together (a total of 43 mutations), 36 substitutions and deletions (85.7%) were predicted to affect the C-terminal half of the protein. Fifteen mutations (35.7%) were notably clustered within the C-terminal nucleotide-binding domain (NBD2) (fig. 1), which is encoded by exons 28, 29, and 30. It is noteworthy that seven mutations (16.7%) were

located in exon 24, and three of these mutations were predicted to influence the codon for a single residue, R1138. Remarkably, approximately one-third (12) of all mutations affected arginyl residues. Also, it is interesting to note that all but two mutations (F568S and G1203D) located in the last transmembrane domain were predicted to reside in cytoplasmic regions of *ABCC6*. Most individuals in whom two mutant alleles were identified were compound heterozygotes.

Small and large deletions, insertions, and nonsense mutations (which accounted for 13 of the 36 mutations characterized in the present study) were all predicted to result in premature termination of translation and would therefore be pathogenic. Premature termination mutations frequently result in the nonsense-mediated decay (NMD) of mutant mRNA products and significantly reduce mutant transcript levels (Maquat 1996; Nagy and



**Figure 1** Localization of mutations causing PXE in *ABCC6*. *A*, The positions of mutations presented as either nucleotide changes or amino acid substitutions are indicated with respect to the exon/intron structure of *ABCC6*. The asterisk indicates mutations that have been described only by others. Boxes represent exons drawn approximately to scale. The number of every fifth exon is indicated. Unshaded boxes show exons encoding elements of NBD1 and NBD2. *B*, Horizontal lines indicate three large deletions involving some or all *ABCC6* exons. The horizontal line with dashes depicts a large deletion involving all of *ABCC6*, with deletion breakpoints both upstream and downstream of *ABCC6*. *C*, The predicted topology of *ABCC6* contains three transmembrane domains: TMD<sub>0</sub>, TMD<sub>1</sub>, and TMD<sub>2</sub>, with five, six, and six membrane-spanning segments, respectively. NBD1 and NBD2 are also indicated. The various domains of *ABCC6* are approximately aligned with the various exons encoding these regions.

**Table 3****Missense Neutral Variants Identified in the *ABCC6* Gene in a Cohort of 122 Patients**

Amino Acid	CHANGE IN		STATUS <sup>a</sup>	ORIGIN(S) <sup>b</sup>	EXON(S)	NO. OF ALLELES/ PXE CHROMOSOMES	NO. OF ALLELES/ CONTROL CHROMOSOMES <sup>c</sup>
	Nucleotide						
G61D	182G→A		ht	SA	2	1/244	0/200
G207R	619G→A		ht	Belgium	6	1/244	0/200
R265G	793A→G		ht	Belgium	7	1/244	0/200
K281E <sup>d</sup>	841A→G		ht, hm	SA	8	5/8 <sup>d</sup>	Nd
I319V <sup>d</sup>	955A→G		ht, hm	SA	8	5/8 <sup>d</sup>	Nd
N497K	1489C→A		ht	Belgium	12	1/244	0/200
V614A	1841T→C		ht, hm	All	14	200/244	163/200
H632Q <sup>d</sup>	1896C→A		ht, hm	SA, Belgium	15	17/24 <sup>d</sup>	Nd
L953H	2858T→A		ht	US	22	1/244	0/200
W1241C	3723G→C		ht	Germany	26	1/244	0/200
R1268Q	3803G→A		ht	All	27	23/244	31/200

<sup>a</sup> ht = heterozygote; hm = homozygote.

<sup>b</sup> SA = South Africa.

<sup>c</sup> Nd = not determined.

<sup>d</sup> Neutral variant characterized by sequencing only.

Maquat 1998; Frischmeyer and Dietz 1999). In some cases, however, premature termination mutations can escape NMD and result in a substantial amount of truncated proteins. These mutations are often located close to the end of the open reading frame (Nijbroek et al. 1995; Mickle et al. 1998; Nagy and Maquat 1998). Alternatively, premature termination mutations could result in exon skipping. Such consequences have been described in several inherited disorders, notably for cystic fibrosis, which is caused by mutations in the *ABCC7* gene (Dietz et al. 1993; Hull et al. 1994; Messiaen et al. 1997). Because several premature termination mutations in *ABCC6* are located near both the 5' and 3' ends of the gene, the consequences of premature termination mutations should therefore be experimentally assessed case by case. One nonsense mutation (R1141X) that we have previously characterized in a homozygous state was indeed associated with no detectable *ABCC6* messenger in RNA samples obtained from skin fibroblasts (Le Saux et al. 2000), and the absence of any *ABCC6* mRNA is probably caused by NMD and would result in a null allele. The consequence of the out-of-frame deletion *ABCC6*del23–29 was recently investigated (Ringpfeil et al. 2001). This mutation was shown to result in the deletion of 1,213 nucleotides of the mRNA, associated with a premature termination codon in exon 30 that probably results in a truncated protein. The splice-site mutations that we have identified were also likely to cause disease, given that they would probably result in either exon skipping or activation of a cryptic splice site that would lead to either a truncated protein or an aberrant one. The putative splice-site mutation 4041G→C is of particular interest, because it may result in aberrant mRNA splicing in addition to an

amino acid substitution, (Q1347H). Indeed, the mutation occurring at the last nucleotide of exon 28 at the donor splice site lowered the splice-potential score (Shapiro and Senapathy 1987) from 92.1 to 78.6. Moreover, an identical mutation in *ABCC7* (*CFTR* [GenBank accession number NM\_000492]), which is responsible for cystic fibrosis, involved the same glutamyl residue, Q1291H (3873G→C), at the last nucleotide of exon 20 of the *ABCC7* gene and resulted in a glutamyl-to-histidyl residue substitution. RNA-based PCR analysis revealed that Q1291H in the *ABCC7* gene was also a splice mutation. Both correctly and aberrantly spliced mRNAs were produced from the Q1291H allele. The incorrectly spliced product resulted from the use of a nearby cryptic splice site (Jones et al. 1992). We predict that a similar aberrant splice product could occur as a consequence of the Q1347H mutation in *ABCC6*.

All missense mutations presented in tables 1 and 2 were considered pathogenic, because they were not found in our control panel of 200 alleles and because they involved residues conserved among all nine human *ABCC* proteins.

#### Neutral Variants

Nucleotide changes in the *ABCC6* gene that are predicted to result in amino acid substitutions and are categorized as neutral (non-disease-causing) variants are reported in table 3. These neutral variants did not reveal any clustering. Three of the neutral variants (K281E, I319V, and H632Q) could not be detected by SSCP or CSGE. These changes were identified only by nucleotide sequencing of PCR conformers that contain other silent changes (data not shown) or mutations. The frequencies

of K281E, I319V, and H632Q in our PXE cohort and control panel were, consequently, not assessed. Most of the neutral variants were unique; however, two of these alleles (V614A and R1268Q) were found at 81.9% and 9.4%, respectively, in the cohort of patients with PXE.

#### Characterization of Two *Alu*-Mediated Deletions

*ABCC6del23–29*.—A loss of heterozygosity of an R1141X allele was detected in three affected children of a two-generation family from the United States. These affected individuals seemed homozygous for R1141X; whereas the mother appeared to be heterozygous for this allele, and the father appeared to have two normal alleles. Haplotype analysis performed with 12 microsatellites on chromosome 16p13.1 (Le Saux et al. 1999) indicated, however, a heterozygous carrier status for the nonsense mutation of the three affected offspring. These results suggested that the affected offspring in this family had inherited a single maternal R1141X mutation and a paternally derived deletion involving exon 24, thereby reducing the nonsense mutation to hemizyosity in all three patients. Several polymorphic variants in exons 14 and 19, intron 25, and the *ABCC6* 3' untranslated region (UTR) (Le Saux et al. 2000) were subsequently analyzed by SSCP to determine the extent of this deletion. The experiment revealed the deletion in this family to be identical to a recently reported *Alu*-mediated deletion of *ABCC6* exons 23–29 in several apparently unrelated families (Ringpfeil et al. 2001). PCR analysis, using intron 21 and 30 primers flanking the deletion breakpoints, confirmed the paternal origin of this 16,415-bp deletion within this pedigree (data not shown). We have not found this deletion mutation in our control panel of 200 alleles. Moreover, we observed a frequency of this deletion of 12.9% in our cohort of patients with PXE (table 2).

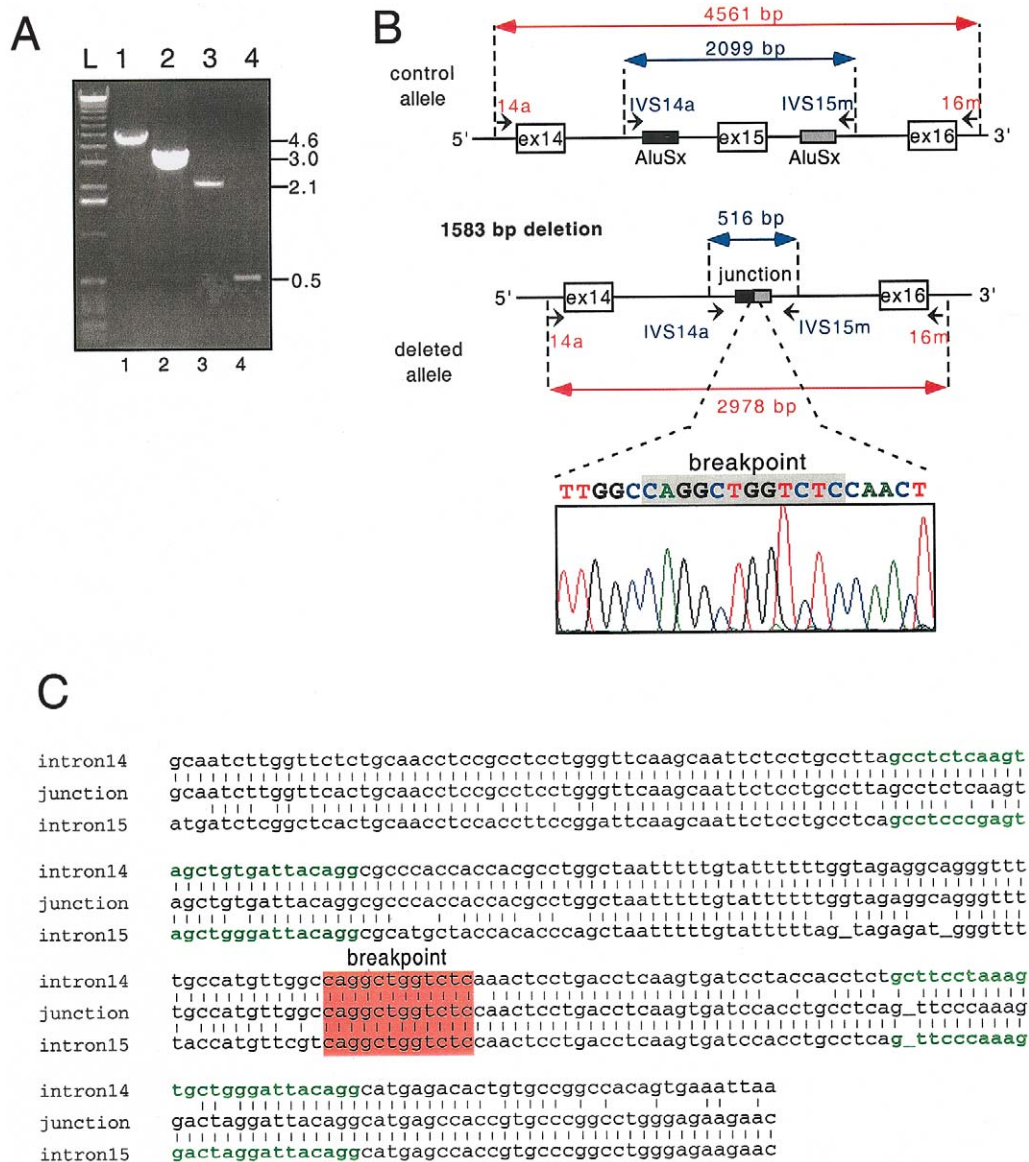
*ABCC6del15*.—We observed a different out-of-frame deletion in *ABCC6* in a single family of Indian ancestry originating from South Africa. This mutation was inferred from unsuccessful attempts to use PCR to amplify exon 15 of *ABCC6* from an affected member of this family, in an analysis in which all other *ABCC6* exons could successfully be amplified. Using PCR primers in introns 13 and 16, we obtained a PCR product of ~3.0 kb, significantly shorter than the 4.6-kb PCR product obtained from a control amplification (fig. 2A and 2B). We designed a new pair of primers flanking two *Alu*Sx sequences present in introns 14 and 15. The patient-derived PCR product obtained using these new primers was ~0.5 kb; when the same primers were used with control DNA, the PCR product was 2.1 kb. Both sets of PCR experiments indicated a 1.6-kb deletion within *ABCC6* that resulted in the loss of exon 15 (fig. 2A and 2B). Sequence analysis revealed a 1,583-nucleotide de-

letion that included all of exon 15 (*ABCC6del15*). The breakpoint occurred within a 12-bp domain (fig. 2C) flanked by two 26-bp *Alu* core sequences (Rudiger et al. 1995), suggesting an *Alu*-mediated deletion. This deletion of exon 15 would result in a frameshift within the *ABCC6* mRNA synthesized from the mutant allele, substituting the first codon of exon 16 for a nonsense mutation (TAA). If an *ABCC6* protein were encoded from this mutant allele, the resulting polypeptide would be shortened by 880 amino acids and would lack both nucleotide-binding domains (NBDs). A haplotype analysis of this Indian family, which was performed with 17 microsatellites spanning the region p13.1 of chromosome 16, revealed a stretch of 12 consecutive homozygous markers both paternally and maternally inherited in the affected daughters (fig. 3A). The homozygosity of this region of chromosome 16 was in agreement with the consanguineous nature of this family. The unaffected sister, however, was heterozygous for this deleted allele and had inherited a maternal chromosome that conferred her carrier status, which was confirmed by PCR (fig. 3B). *ABCC6del15* was not found in our control panel of 200 alleles nor was this deletion observed in any of the other 122 patients included in the present study.

#### *ABCC6* Pseudogenes

During the course of the present mutational analysis of the *ABCC6* gene, several sequence variants that we detected seemed to be derived from possible duplicated regions of 16p13.1 that could correspond to one or more *ABCC6* pseudogenes. Indeed, a nucleotide substitution in exon 9—that would result in a nonsense mutation Q378X (1132C→T)—and a single insertion in exon 2 (196–197insT) were observed in all Afrikaner and several European patients who had already been shown to be homozygous or compound heterozygous for other *ABCC6* mutations. Moreover, all 26 affected and unaffected individuals tested thus far were found to be heterozygous for both these apparent mutations. Exons 2 and 9 of *ABCC6* of 15 Afrikaner patients, 4 European patients, and 3 unaffected control individuals were sequenced. Mutations 196–197insT and Q378X were found to be randomly associated with all of the homozygous or compound heterozygous mutant alleles. Because these mutations would lead to premature termination of translation, both Q378X and 196–197insT were potentially disease-causing alleles. The high frequency of these variants in our control population suggested that these alleles were, perhaps, part of a pseudogene. Indeed, BLAST searches of the draft of the Human Genome sequence at Web sites of the National Center for Biotechnology Information (NCBI) and Celera revealed two pseudogenelike sequences on chro-



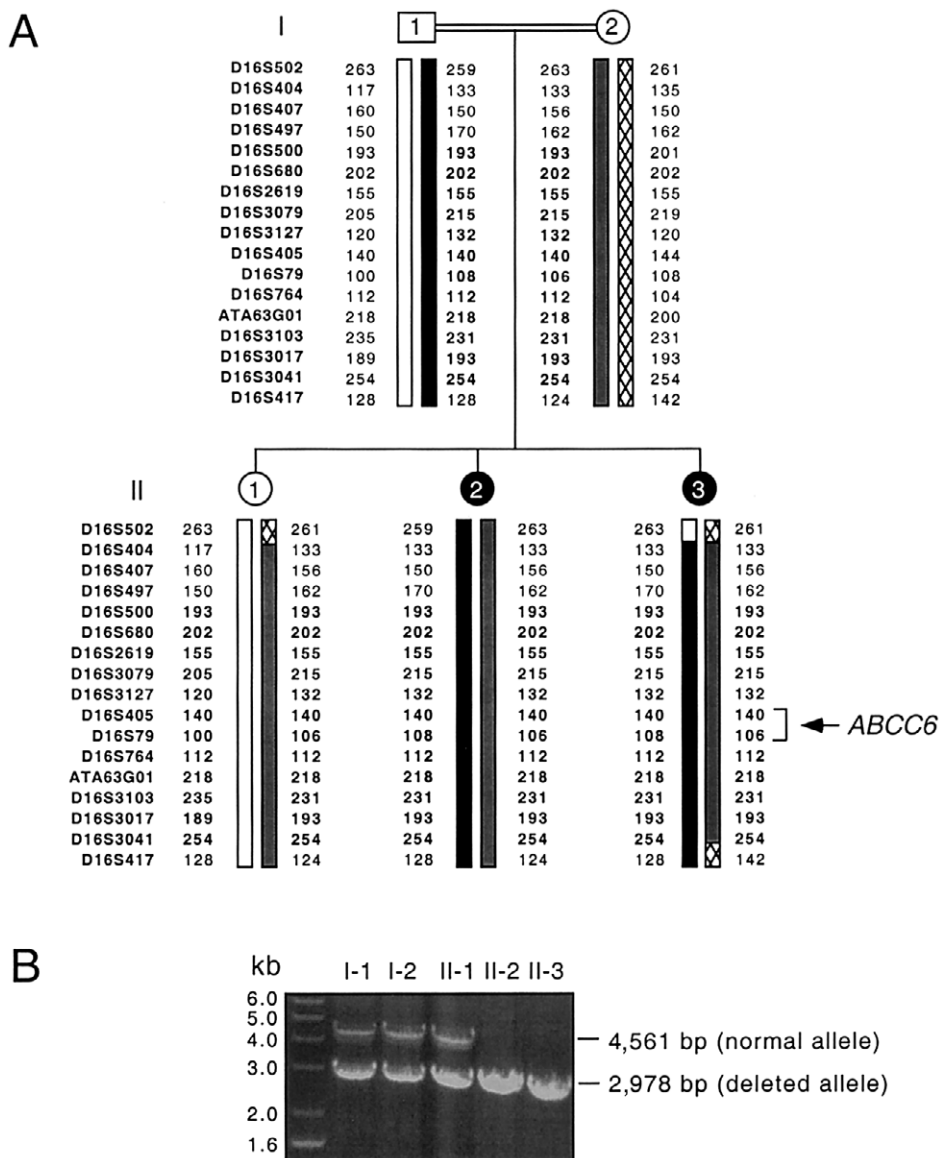


**Figure 2** Characterization of a homozygous deletion of *ABCC6* exon 15 in a patient with PXE who was of Indian origin. *A*, PCR analysis of the deletion mutation. The amplification of a region corresponding to exons 14, 15, and 16 using primers 14a and 16m with genomic DNA from a control individual (*lane 1*) and from the Indian patient with PXE (*lane 2*) resulted in PCR products of 4.6 kb and 3.0 kb, respectively. Using primers flanking *Alu* repeats present in intron 14 and 15 (IVS14a and IVS15m), we obtained PCR products of 2.0 kb and 0.5 kb from the same control individual (*lane 3*) and the Indian patient with PXE (*lane 4*), indicating that a homozygous deletion of about 1.6 kb occurred in the subject with PXE. The position of the primers used to PCR-amplify exon 15 are shown in panel *B*. *B*, Schematic representation of the genomic region surrounding *ABCC6* exon 15 in an unaffected individual (*top*) and in the Indian patient with PXE (*bottom*). The sequence of the junction of the deleted allele is also shown. *C*, The highest sequence homology of the two *Alu Sx* repeats within intron 14 and 15 was noted in a 12-bp region that contains the 1,583-bp deletion breakpoint (*red*). Nucleotide sequence denoted in green represents the 26-bp core sequences flanking the breakpoint domain in intron 14 and 15.

mosome 16 that contained regions highly homologous to *ABCC6* exons 1–4 and exons 1–9, respectively.

The sequence divergence between these putative pseudogenes and *ABCC6* (absent in any published *ABCC6* mRNA sequences) corresponded to several nucleotide substitutions and insertions that we have detected in our

cohort of patients with PXE, including Q378X and 196–197insT (table 4). Interestingly, three of these substitutions—1171A→G (V39V), 190T→C/191G→A (W64Q) and 189G→C (L63L)—were found in a homozygous state, indicating that these alleles can be found both in the pseudogenes and the parental *ABCC6*. The re-



**Figure 3** Haplotype analysis of a family with PXE of Indian ancestry originating from South Africa. *A*, The analysis was performed with 17 D16S polymorphic markers spanning ~25 cM of 16p13.1. This analysis allowed the assignment of paternal and maternal chromosomes to the three offspring in this pedigree. Markers indicated in bold correspond to a stretch of 12 microsatellites found in a homozygous state and suggested consanguinity in this pedigree. *B*, The cosegregation of the deletion ABCC6del15 and the phenotype was verified using PCR amplification of genomic DNA from the family members. The deleted alleles generated a PCR product of 2,978 bp, whereas the PCR product derived from the normal allele was 4,561 bp. Individuals I-1, I-2, and II-1 carried both normal and mutant alleles, and both affected individuals, II-2 and II-3, displayed a homozygous deletion.

gion homologous to exons 1-9 of *ABCC6* was found in the Celera database, but no location could be deduced. However, the region homologous to exons 1-4 was identified on a chromosome 16 working-draft segment in the NCBI database (GenBank accession number NT\_010393) at 275 kb centromeric to the parental *ABCC6* gene and 55 kb centromeric to the *NPIP* gene (GenBank accession number XM\_017612) (Le Saux et al. 1999; Cai et al. 2000). However, this

pseudogene was not contained within a contig of four overlapping BAC clones, 962B4, 13F4, 589H1, and 256A9 (GenBank accession numbers, U91318, AC002039, AC002045, and AC002492, respectively) that cover ~415 kb of genomic DNA that extends centromeric of the *ABCC6* gene (Le Saux et al. 1999; Cai et al. 2000). Moreover, the NCBI map of chromosome 16 currently reports at least nine gaps of unknown length between *ABCC6* and the putative pseudogene contain-

**Table 4**  
**Nucleotide and Apparent Amino Acid**  
**Changes Found in Two *ABCC6***  
**Pseudogenes**

Amino Acid	CHANGE IN	
	Nucleotide	EXON
V39V <sup>a</sup>	117A→G	2
L63L <sup>a</sup>	189G→C	2
W64Q <sup>a</sup>	190T→C/191G→A	2
...	196–197insT	2
A78T	232G→A	3
A158V	473C→T	4
S359S	1077A→G	9
Q378X	1132C→T	9
L381L	1141T→C	9

<sup>a</sup> Variants found in homozygous states.

ing exons 1–4. It is therefore likely that the *ABCC6* pseudogene containing exons 1–4 is located in a proximal region of chromosome 16 at a distance >415 kb. The sequence surrounding this pseudogene diverged from *ABCC6* at breakpoints located 3.4 kb 5' of the exon 1 homologous sequence and 4.4 kb 3' of the exon 4 homologous sequence. The domain within the pseudogene homologous to the 5' UTR of *ABCC6* contained two deleted regions of 142 and 315 bp, located at 2.8 kb and 0.9 kb, respectively, from the exon 1 homologous sequence.

#### Genotype-Phenotype Correlation

The clinical information of 11 patients with PXE from Belgium and 15 from South Africa was available at the time of the present study. Among the four Belgian patients with homozygous R1141X alleles, three had typical skin lesions, and all patients displayed moderate-to-severe ocular involvement. In one patient the skin lesions were very mild. Five South African patients carried homozygous R1339C alleles. They also presented typical light-to-moderate skin lesions and moderate-to-severe ocular symptoms. However, three of these patients with PXE had light-to-severe cardiovascular abnormalities. In the group of 17 patients who carried compound heterozygous mutations, the skin lesions appeared typical in most, with a significant variability in ocular and cardiovascular findings. Although the severity of dermal and ocular lesions seems to correlate moderately with the age of the patients (as has been observed elsewhere [Neldner 1988]), no specific correlation appears between the phenotype and the type or position of the mutations.

#### Discussion

The present study describes the identification of a spectrum of mutations in PXE. Thirty-six mutations were characterized, and, among these, 28 were novel variants.

Most mutations were missense variants. Indeed, 21 nucleotide substitutions were predicted to result in an amino acid change. In addition, we have detected six small insertions or deletions, five nonsense mutations, two nucleotide substitutions likely to involve aberrant mRNA splicing, and two large deletions. Therefore, the total number of PXE mutations known to date is 43. Putative disease-causing mutations were identified in ~64% of the 244 chromosomes studied in affected individuals, and at least one disease allele was found in 85.2% of affected individuals.

#### PXE Mutations

The high degree of allelic heterogeneity observed in PXE was comparable to that of other autosomal recessive diseases. Although most mutations observed in *ABCC6* were unique, two variants (R1141X and *ABCC6*del23–29) occurred at a high frequency (table 2). Overall, both mutations were found to occur at similar frequencies, 18.8% and 12.9%, respectively. However, when patient ancestries were considered, R1141X was found to occur at a greater frequency in Europe, whereas *ABCC6*del23–29 was preponderant in the United States (table 2). Such high frequencies suggest that these alleles are likely to be transmitted identical by descent from common ancestral alleles. Seventy percent of the individuals from the United States are of European ancestry, with some patients and families originating in the United Kingdom. Four of the five *ABCC6*del23–29 alleles found in Europe were identified in British patients. It is therefore possible that the *ABCC6*del23–29 alleles are copies of a founder mutation that originated in the British Isles before the first wave of immigrants to the New World, in spite of divergent haplotypes encountered in several families with this *Alu*-mediated deletion (Ringpfeil et al. 2001). It is indeed reasonable to expect a rapid haplotype divergence in chromosomal regions extending ~10 cM on each side of the *ABCC6* gene over a period of >200 years. A similar hypothesis could explain the high frequency of R1141X alleles in the European sample. However, to demonstrate that the various R1141X and *ABCC6*del23–29 alleles are identical by descent, the analysis of additional microsatellite markers and single-nucleotide polymorphisms within and in close proximity to *ABCC6* will be required.

The mutation-detection rate obtained in the present study indicated that a significant number of mutations escaped detection by SSCP and CSGE. However, the percentage of detected mutations is comparable to those in similar PCR-based studies that have defined a spectrum of mutations in *ABCA4* (Lewis et al. 1999; Maugeri et al. 1999; Rivera et al. 2000). Mutations in *ABCA4*, which also encodes an ABC transporter, are responsible

for Stargardt disease (Allikmets et al. 1997b) and retinitis pigmentosa (Cremers et al. 1998; Martinez-Mir et al. 1998), and they could also be a factor in age-related macular degeneration (Allikmets et al. 1997a). To determine whether our screening methods were a limitation in the mutation-detection rate, all 31 exons of *ABCC6* were sequenced from seven patients who had one or no mutant alleles identified. No additional pathogenic sequence alteration could be detected, suggesting that other sequence variants could be involved in PXE. Such sequence variants may include large deletions, duplications, and alterations of sequence within introns, within the promoter domain, and within the 3'UTR of *ABCC6*. All of these rearrangements would be undetected in our PCR-based analysis of exonic regions. It is also possible that the mutation-detection rate could have been affected by the presence of patients who have mutated alleles in a heterozygous state and who have developed a partial phenotype (van Soest et al. 1997; Bacchelli et al. 1999; Rubegni et al. 2000; Sherer et al. 2001). In addition, our criteria for defining a disease allele included the prerequisite that such an allele not be present in 200 control chromosomes derived from unaffected individuals. Because it is not unreasonable to expect the occasional presence of disease alleles in a heterozygous state among unaffected individuals, particularly for a disease of predominantly recessive inheritance, this rule probably led us to overlook true alleles predisposing to the disease.

It is remarkable that the two large deletions found in this study, *ABCC6*del23–29 and *ABCC6*del15, were mediated by the same type of *Alu* repeats (*AluSX*), both containing a core sequence of 26 bp (Rudiger et al. 1995). The analysis of the noncoding regions of *ABCC6* revealed a high proportion of repetitive elements (Ringpfeil et al. 2001), suggesting that this gene might be susceptible to a significant level of genomic rearrangements. Indeed, *ABCC6* intronic sequences contained 38 *AluSX* repeats, of which 19 presented a 26-bp core sequence that was  $\geq 95\%$  conserved. The presence of these numerous repetitive sequences supports our hypothesis that a significant fraction of undetected mutations (table 2) could derive from DNA rearrangements that have yet to be characterized.

#### Mutation Clusters

The distribution pattern of *ABCC6* mutations showed a cluster of disease-causing variants in a region of the gene that encodes the C-terminal end of the protein (fig. 1), in contrast to the neutral variants, which appeared to be evenly distributed (table 3). Indeed, most (36 of 43) mutations, including deletions, were located in the second half of the gene, and, remarkably, 24 (56%) mutations were located in exon 24 and NBD2, which is

encoded by exons 28–30 (fig. 1). The significance of this apparent clustering of mutations in the NBD2 domain is not known. However, 70% of all missense mutations occur within two domains of *ABCC6*: a large cytoplasmic loop of 70 amino acids encoded by exon 24 and NBD2 and only two missense mutations (L673P and R765Q; see fig. 1) were located in NBD1. The overwhelming number of substitutions detected in NBD2 in patients with PXE suggests that the two NBDs of *ABCC6* are functionally nonequivalent. Moreover, the clustering of missense mutations in NBD2 suggests that altered function of this ATP-binding domain is critical to the development of the PXE phenotype.

The distinct role of NBDs of several other ABC transporters—such as *ABCC7* (CFTR), *ABCC8* (SUR1 [GenBank accession number NM\_000352]), and, notably, *ABCC1* (MRP1 [GenBank accession number XM\_017599])—has been demonstrated (Szabo et al. 1999; Ueda et al. 1999; Gao et al. 2000; Nagata et al. 2000; Aleksandrov et al. 2001). However, there are some distinctive differences in the proposed models of channel and transport activities for these transmembrane proteins. The binding and hydrolysis of ATP at NBD1 in *ABCC7* and *ABCC8* initiate channel activity. In contrast, the functional model of *ABCB1* (P-glycoprotein [GenBank accession number NM\_000927]) involves the alternate use of NBD1 and NBD2, because the two NBDs appear to be functionally equivalent (Urbatsch et al. 1995; Senior and Gadsby 1997). The suggested transport mechanism of *ABCC1*, which presents a high degree of identity with *ABCC6* (44.6%), is initiated with the binding and hydrolysis of ATP at NBD2, followed by the trapping of ADP (Gao et al. 2000; Hou et al. 2000; Nagata et al. 2000). The energy released from the hydrolysis of the nucleotide at NBD2 is used for the active transport of a substrate. The transport would result in a conformational change favorable to ATP binding at NBD1. The hydrolysis of this ATP would then be used to return the pump to its initial conformation (Hou et al. 2000). Mutational analysis of both *ABCC1* NBDs showed that mutations at NBD2 abolished transport, whereas mutations in NBD1 only resulted in the decrease of transport activity by  $\sim 70\%$  (Gao et al. 2000; Hou et al. 2000). Because of the high similarity with *ABCC1*, it would be reasonable to infer a similar structure/function relationship for *ABCC6*. Hence, mutations within or in close proximity to the NBD2 Walker motifs of *ABCC6* could abolish all transport activity. The presence of 50% of all missense mutations in NBD2 (exons 28, 29, and 30) is in good agreement with this hypothesis. Furthermore, homozygous or compound heterozygous mutations in NBD1 may not contribute significantly to the development of the PXE phenotype, because an intact NBD2 could sustain a residual transport activity (30%), which could be com-

parable to the overall transport capacity of an asymptomatic individual carrying a single disease-causing allele (50%).

Of the five mutations in exon 24, four amino acid substitutions involve a change in charged residues. On the basis of observations that substitutions of charged residues in the CL4 domain of ABCC7 (CFTR) resulted in protein misprocessing, it is possible to infer that mutations in exon 24 of ABCC6, which encodes an equivalent domain, could interfere with the proper folding of ABCC6 (Seibert et al. 1996). Missense mutations in other ABCC6 domains, such as transmembrane regions (A455P, F568S, and G1203D), could also affect the protein processing or its integration into the cytoplasmic membrane. Moreover, the introduction of a prolyl residue at position L673, which is one of the two substitutions in NBD1, could, similarly, result in an incorrect folding. Indeed, it has been suggested that the proper folding of ABCC7 (CFTR) depends on the integrity of NBD1 and on complex interactions between both NBDs and their surrounding environment (Dalemans et al. 1991; Pollet et al. 2000).

#### *Phenotype-Genotype Correlation*

No significant correlation could be established between the clinical manifestations and disease-causing alleles of the 26 patients with PXE for whom this information was available. The small size of this cohort may be a factor in the lack of obvious relation between the phenotype and genotype. Although the severity of the phenotype seemed to be related to the age of the patients, it appeared not to be mutation dependent. Indeed, the mutations identified in these patients (premature termination mutations and missense mutations located in NBD2) are all predicted to result in the complete loss of ABCC6 function. It is therefore reasonable to assume that PXE mutations predispose carriers to the typical PXE clinical lesions, but the contribution of other factors—such as trauma, in the case of ocular lesions, and, perhaps, diet or lifestyle—may determine the age at onset and the severity of the clinical manifestations.

Mutations in genes encoding many of the ABC transporters produce phenotypes consistent with the overall functions of these different transporters (de Vree et al. 1998; Strautnieks et al. 1998; Brooks-Wilson et al. 1999; Rust et al. 1999). In contrast, it is quite unclear how mutations in ABCC6 will influence the assembly and deposition of elastic fibers and the subsequent development of the ocular, dermal, and vascular phenotype of PXE. It has been shown recently that the liver and kidney tissues express relatively abundant levels of ABCC6 mRNA (Kool et al. 1999), and very recent immunolocalization studies have identified a basolateral location for ABCC6 in both hepatocytes and renal ep-

ithelial cells (Madon et al. 2000). It is possible, therefore, that an aberrant transport function of ABCC6 in the kidney and/or the liver could precipitate secondary changes in the dermis and the arterial wall that lead to calcification of elastic fibers and the development of PXE. Indeed, for this reason, Uitto and coworkers (2001) have suggested that perhaps PXE is more a heritable metabolic disorder than a connective tissue disease. Alternatively, altered renal and hepatic ABCC6 function may be of little consequence to PXE, and subtle changes in the expression of this ABC transporter in the tissue affected in patients with PXE may be instrumental in influencing an appropriate extracellular matrix environment for the correct assembly of elastic fibers. Although the substrate transported by ABCC6 is unknown, a comparison with other ABCC transporters suggests that it is unlikely that calcification of elastic fibers in the tissue of patients with PXE results from direct changes in calcium transport by ABCC6. Glutathione conjugates of simple or complex anions are thought, in general, to be the substrates for ABCC6, and the continuing work to identify these substrates will certainly provide valuable insight into the functional relationships between ABCC6 and the complex PXE phenotype.

#### **Acknowledgments**

We are very grateful to all the patients and their relatives, whose cooperation made this study possible. We would like to thank Drs. András Váradi and Balázs Sarkadi for valuable comments regarding the role and functional consequences of mutations in ABCC6. We are also grateful for the various contributions of the members of the PXE International Research Consortium, particularly Patrick Terry. This work was supported by National Institutes of Health grant EY13019 (to C.B.), Research Centers in Minority Institutions grant RR03061 from National Center for Research Resources to the Pacific Biomedical Research Center of the University of Hawaii, and Telethon-Italy grant 696 (to I.P.R.).

#### **Electronic-Database Information**

Accession numbers and URLs for data in this article are as follows:

BLAST, <http://www.ncbi.nlm.nih.gov/BLAST/>  
 Celera, <http://www.celera.com/>  
 GenBank, <http://www.ncbi.nlm.nih.gov/Genbank/index.html> (for BAC clone CIT987SK-A-962B4 [accession number U91318], BAC clone CIT987SK-A-13F4 [accession number AC002039], BAC clone CIT987SK-A-589H1 [accession number AC002045], BAC clone CIT987SK-A-256A9 [accession number AC002492] ABCC6 cDNA [accession number NM\_001171], chromosome 16 working-draft segment [accession number NT\_010393], ABCC7 cDNA [accession number NM\_000492], ABCC8 cDNA

[accession number NM\_000352], *ABCC1* cDNA [accession number XM\_017599], *ABCB1* cDNA [accession number NM\_000927], and *NPIP* cDNA [accession number XM\_017612]

Institut de Biologie et Chimie des Protéines, <http://www.ibcp.fr> (for ClustalW program)

Institute for Genomic Research, The, <http://www.tigr.org>  
National Center for Biotechnology Information, <http://www.ncbi.nlm.nih.gov/>

Online Mendelian Inheritance in Man (OMIM), <http://www.ncbi.nlm.nih.gov/Omim/> (for PXE [MIM 177850 and MIM 264800])

## References

- Aleksandrov L, Mengos A, Chang X-B, Aleksandrov A, Rioridan JR (2001) Differential interactions of nucleotides at the two nucleotide binding domains of the cystic fibrosis transmembrane conductance regulator. *J Biol Chem* 276:12918-12923
- Allikmets R, Shroyer NF, Singh N, Seddon JM, Lewis RA, Bernstein PS, Peiffer A, Zabriskie NA, Li Y, Hutchinson A, Dean M, Lupski JR, Leppert M (1997a) Mutation of the Stargardt disease gene (ABCR) in age-related macular degeneration. *Science* 277:1805-1807
- Allikmets R, Singh N, Sun H, Shroyer NF, Hutchinson A, Chidambaram A, Gerrard B, Baird L, Stauffer D, Peiffer A, Rattner A, Smallwood P, Li Y, Anderson KL, Lewis RA, Nathans J, Leppert M, Dean M, Lupski JR (1997b) A photoreceptor cell-specific ATP-binding transporter gene (ABCR) is mutated in recessive Stargardt macular dystrophy. *Nat Genet* 15:236-246
- Baccarani-Contri M, Boraldi F, Taparelli F, De Paepe A, Ronchetti IP (1996) Matrix proteins with high affinity for calcium ions are associated with mineralization within the elastic fibers of pseudoxanthoma elasticum dermis. *Am J Pathol* 148:569-577
- Bacchelli B, Quaglino D, Gheduzzi D, Taparelli F, Boraldi F, Trolli B, Le Saux O, Boyd CD, Ronchetti IP (1999) Identification of heterozygote carriers in families with a recessive form of pseudoxanthoma elasticum (PXE). *Mod Pathol* 12:1112-1123
- Bergen AA, Plomp AS, Schuurman EJ, Terry S, Breuning M, Dauwese H, Swart J, Kool M, van Soest S, Baas F, ten Brink JB, de Jong PT (2000) Mutations in *ABCC6* cause pseudoxanthoma elasticum. *Nat Genet* 25:228-231
- Brooks-Wilson A, Marcil M, Clee SM, Zhang LH, Roomp K, van Dam M, Yu L, et al (1999) Mutations in *ABC1* in Tangier disease and familial high-density lipoprotein deficiency. *Nat Genet* 22:336-345
- Cai L, Struk B, Adams MD, Ji W, Haaf T, Kang HL, Dho SH, et al (2000) A 500-kb region on chromosome 16p13.1 contains the pseudoxanthoma elasticum locus: high-resolution mapping and genomic structure. *J Mol Med* 78:36-46
- Christiano AM, Lebowitz MG, Boyd CD, Uitto J (1992) Workshop on pseudoxanthoma elasticum: molecular biology and pathology of the elastic fibers. Jefferson Medical College, Philadelphia, Pennsylvania, June 10, 1992. *J Invest Dermatol* 99:660-663
- Cotton RG, Scriver CR (1998) Proof of "disease causing" mutation. *Hum Mutat* 12:1-3
- Cremers FP, van de Pol DJ, van Driel M, den Hollander AI, van Haren FJ, Knoers NV, Tijmes N, Bergen AA, Rohrschneider K, Blankenagel A, Pinckers AJ, Deutman AF, Hoyng CB (1998) Autosomal recessive retinitis pigmentosa and cone-rod dystrophy caused by splice site mutations in the Stargardt's disease gene ABCR. *Hum Mol Genet* 7:355-362
- Dalemans W, Barbry P, Champigny G, Jallat S, Dott K, Dreyer D, Crystal RG, Pavirani A, Lecocq JP, Lazdunski M (1991) Altered chloride ion channel kinetics associated with the delta F508 cystic fibrosis mutation. *Nature* 354:526-528
- Darier J (1896) Pseudo-xanthome élastique. IIIème Congrès Internationale de Dermatologie de Londres 289-295
- de Vree JM, Jacquemin E, Sturm E, Cresteil D, Bosma PJ, Aten J, Deleuze JF, Desrochers M, Burdelski M, Bernard O, Oude Elferink RP, Hadchouel M (1998) Mutations in the *MDR3* gene cause progressive familial intrahepatic cholestasis. *Proc Natl Acad Sci USA* 95:282-287
- Dietz HC, Valle D, Francomano CA, Kendzior RJ Jr, Pyeritz RE, Cutting GR (1993) The skipping of constitutive exons in vivo induced by nonsense mutations. *Science* 259:680-683
- Frischmeyer PA, Dietz HC (1999) Nonsense-mediated mRNA decay in health and disease. *Hum Mol Genet* 8:1893-1900
- Ganguly A, Rock MJ, Prockop DJ (1993) Conformation-sensitive gel electrophoresis for rapid detection of single-base differences in double-stranded PCR products and DNA fragments: evidence for solvent-induced bends in DNA heteroduplexes. *Proc Natl Acad Sci USA* 90:10325-10329
- Gao M, Cui H-R, Loe DW, Grant CE, Almquist KC, Cole SPC, Deeley RG (2000) Comparison of the functional characteristics of the nucleotide binding domains of multidrug resistance protein 1. *J Biol Chem* 275:13098-13108
- Germain DP, Perdu J, Remones V, Jeunemaitre X (2000) Homozygosity for the R1268Q mutation in *MRP6*, the pseudoxanthoma elasticum gene, is not disease-causing. *Biochem Biophys Res Commun* 274:297-301
- Hou Y-X, Cui L, Riordan JR, Chang X-B (2000) Allosteric interactions between the two non-equivalent nucleotide binding domains of multidrug resistance protein *MRP1*. *J Biol Chem* 275:20280-20287
- Hull J, Shackleton S, Harris A (1994) The stop mutation R553X in the *CFTR* gene results in exon skipping. *Genomics* 19:362-364
- Jones CT, McIntosh I, Keston M, Ferguson A, Brock DJ (1992) Three novel mutations in the cystic fibrosis gene detected by chemical cleavage: analysis of variant splicing and a nonsense mutation. *Hum Mol Genet* 1:11-17
- Kool M, van der Linden M, de Haas M, Baas F, Borst P (1999) Expression of human *MRP6*, a homologue of the multidrug resistance protein gene *MRP1*, in tissues and cancer cells. *Cancer Res* 59:175-182
- Le Saux O, Urban Z, Goring HH, Csiszar K, Pope FM, Richards A, Pasquali-Ronchetti I, Terry S, Bercovitch L, Lebowitz MG, Breuning M, van den Berg P, Kornet L, Doggett N, Ott J, de Jong PT, Bergen AA, Boyd CD (1999) Pseudoxanthoma elasticum maps to an 820-kb region of the p13.1 region of chromosome 16. *Genomics* 62:1-10

- Le Saux O, Urban Z, Tschuch C, Csiszar K, Bacchelli B, Quaglini D, Pasquali-Ronchetti I, Pope FM, Richards A, Terry S, Bercovitch L, de Paepe A, Boyd CD (2000) Mutations in a gene encoding an ABC transporter cause pseudoxanthoma elasticum. *Nat Genet* 25:223–227
- Lebwohl M, Schwartz E, Lemlich G, Lovelace O, Shaikh-Bahai F, Fleischmajer R (1993) Abnormalities of connective tissue components in lesional and non-lesional tissue of patients with pseudoxanthoma elasticum. *Arch Dermatol Res* 285: 121–126
- Lewis RA, Shroyer NF, Singh N, Allikmets R, Hutchinson A, Li Y, Lupski JR, Leppert M, Dean M (1999) Genotype/phenotype analysis of a photoreceptor-specific ATP-binding cassette transporter gene, ABCR, in Stargardt disease. *Am J Hum Genet* 64:422–434
- Madon J, Hagenbuch B, Landmann L, Meier PJ, Stieger B (2000) Transport function and hepatocellular localization of mrp6 in rat liver. *Mol Pharmacol* 57:634–641
- Maquat LE (1996) Defects in RNA splicing and the consequence of shortened translational reading frames. *Am J Hum Genet* 59:279–286
- Martinez-Mir A, Paloma E, Allikmets R, Ayuso C, del Rio T, Dean M, Vilageliu L, Gonzalez-Duarte R, Balcells S (1998) Retinitis pigmentosa caused by a homozygous mutation in the Stargardt disease gene ABCR. *Nat Genet* 18:11–12
- Maugeri A, van Driel MA, van de Pol DJ, Klevering BJ, van Haren FJ, Tijmes N, Bergen AA, Rohrschneider K, Blankenagel A, Pinckers AJ, Dahl N, Brunner HG, Deutman AF, Hoyng CB, Cremers FP (1999) The 2588G→C mutation in the ABCR gene is a mild frequent founder mutation in the Western European population and allows the classification of ABCR mutations in patients with Stargardt disease. *Am J Hum Genet* 64:1024–1035
- Messiaen L, Callens T, De Paepe A, Craen M, Mortier G (1997) Characterisation of two different nonsense mutations, C6792A and C6792G, causing skipping of exon 37 in the NF1 gene. *Hum Genet* 101:75–80
- Mickle JE, Macek M, Jr., Fulmer-Smentek SB, Egan MM, Schwiebert E, Guggino W, Moss R, Cutting GR (1998) A mutation in the cystic fibrosis transmembrane conductance regulator gene associated with elevated sweat chloride concentrations in the absence of cystic fibrosis. *Hum Mol Genet* 7:729–735
- Nagata K, Nishitani M, Matsuo M, Kioka N, Amachi T, Ueda K (2000) Nonequivalent nucleotide trapping in the two nucleotide binding folds of the human multidrug resistance protein MRP1. *J Biol Chem* 275:17626–17630
- Nagy E, Maquat LE (1998) A rule for termination-codon position within intron-containing genes: when nonsense affects RNA abundance. *Trends Biochem Sci* 23:198–199
- Neldner KH (1988) Pseudoxanthoma elasticum. *Int J Dermatol* 27:98–100
- Nijbroek G, Sood S, McIntosh I, Francomano CA, Bull E, Pereira L, Ramirez F, Pyeritz RE, Dietz HC (1995) Fifteen novel FBN1 mutations causing Marfan syndrome detected by heteroduplex analysis of genomic amplicons. *Am J Hum Genet* 57:8–21
- Nishida H, Endo M, Koyanagi H, Ichihara T, Takao A, Maruyama M (1990) Coronary artery bypass in a 15-year-old girl with pseudoxanthoma elasticum. *Ann Thorac Surg* 49: 483–485
- Orita M, Iwahana H, Kanazawa H, Hayashi K, Sekiya T (1989) Detection of polymorphisms of human DNA by gel electrophoresis as single-strand conformation polymorphisms. *Proc Natl Acad Sci USA* 86:2766–2770
- Passi A, Albertini R, Baccarani Contri M, de Luca G, de Paepe A, Pallavicini G, Pasquali Ronchetti I, Tiozzo R (1996) Proteoglycan alterations in skin fibroblast cultures from patients affected with pseudoxanthoma elasticum. *Cell Biochem Funct* 14:111–120
- Pollet JF, Van Geffel J, Van Stevens E, Van Geffel R, Beauwens R, Bollen A, Jacobs P (2000) Expression and intracellular processing of chimeric and mutant CFTR molecules. *Biochim Biophys Acta* 1500:59–69
- Rigal D (1881) Observation pour servir à l'histoire de la chéloïde diffuse xanthélasmiq. *Ann Dermatol Syphilol* 2:491–501
- Ringpfeil F, Lebwohl MG, Christiano AM, Uitto J (2000) Pseudoxanthoma elasticum: mutations in the MRP6 gene encoding a transmembrane ATP-binding cassette (ABC) transporter. *Proc Natl Acad Sci USA* 97:6001–6006
- Ringpfeil F, Nakano A, Uitto J, Pulkkinen L (2001) Compound heterozygosity for a recurrent 16.5-kb *Alu*-mediated deletion mutation and single-base-pair substitutions in the *ABCC6* gene results in pseudoxanthoma elasticum. *Am J Hum Genet* 68:642–652
- Rivera A, White K, Stohr H, Steiner K, Hemmrich N, Grimm T, Jurklics B, Lorenz B, Scholl HP, Apfelstedt-Sylla E, Weber BH (2000) A comprehensive survey of sequence variation in the *ABCA4* (ABCR) gene in Stargardt disease and age-related macular degeneration. *Am J Hum Genet* 67:800–813
- Rubegni P, Mondillo S, De Aloe G, Agricola E, Bardelli AM, Fimiani M (2000) Mitral valve prolapse in healthy relatives of patients with familial pseudoxanthoma elasticum. *Am J Cardiol* 85:1268–1271
- Rudiger NS, Gregersen N, Kielland-Brandt MC (1995) One short well conserved region of *Alu*-sequences is involved in human gene rearrangements and has homology with prokaryotic chi. *Nucleic Acids Res* 23:256–260
- Rust S, Rosier M, Funke H, Real J, Amoura Z, Piette JC, Deleuze JF, Brewer HB, Duverger N, Deneffe P, Assmann G (1999) Tangier disease is caused by mutations in the gene encoding ATP-binding cassette transporter 1. *Nat Genet* 22: 352–355
- Seibert FS, Linsdell P, Loo TW, Hanrahan JW, Clarke DM, Riordan JR (1996) Disease-associated mutations in the fourth cytoplasmic loop of cystic fibrosis transmembrane conductance regulator compromise biosynthetic processing and chloride channel activity. *J Biol Chem* 271: 15139–15145
- Senior AE, Gadsby DC (1997) ATP hydrolysis cycles and mechanism in P-glycoprotein and CFTR. *Semin Cancer Biol* 8:143–150
- Shapiro MB, Senapathy P (1987) RNA splice junctions of different classes of eukaryotes: sequence statistics and functional implications in gene expression. *Nucleic Acids Res* 15:7155–7174
- Sherer DW, Bercovitch L, Lebwohl M (2001) Pseudoxanthoma

- elasticum: significance of limited phenotypic expression in parents of affected offspring. *J Am Acad Dermatol* 44:534-537
- Strautnieks SS, Bull LN, Knisely AS, Kocoshis SA, Dahl N, Arnell H, Sokal E, Dahan K, Childs S, Ling V, Tanner MS, Kagalwalla AF, Nemeth A, Pawlowska J, Baker A, Mieli-Vergani G, Freimer NB, Gardiner RM, Thompson RJ (1998) A gene encoding a liver-specific ABC transporter is mutated in progressive familial intrahepatic cholestasis. *Nat Genet* 20:233-238
- Struk B, Cai L, Zach S, Ji W, Chung J, Lumsden A, Stumm M, Huber M, Schaen L, Kim CA, Goldsmith LA, Viljoen D, Figuera LE, Fuchs W, Munier F, Ramesar R, Hohl D, Richards R, Neldner KH, Lindpaintner K (2000) Mutations of the gene encoding the transmembrane transporter protein ABC-C6 cause pseudoxanthoma elasticum. *J Mol Med* 78:282-286
- Struk B, Neldner KH, Rao VS, St Jean P, Lindpaintner K (1997) Mapping of both autosomal recessive and dominant variants of pseudoxanthoma elasticum to chromosome 16p13.1. *Hum Mol Genet* 6:1823-1828
- Szabo K, Szakacs G, Hegedus T, Sarkadi B (1999) Nucleotide occlusion in the human cystic fibrosis transmembrane conductance regulator: different patterns in the two nucleotide binding domains. *J Biol Chem* 274:12209-12212
- Torrington M, Viljoen DL (1991) Founder effect in 20 Afrikaner kindreds with pseudoxanthoma elasticum. *S Afr Med J* 79:7-11
- Ueda K, Komine J, Matsuo M, Seino S, Amachi T (1999) Cooperative binding of ATP and MgADP in the sulfonyleurea receptor is modulated by glibenclamide. *Proc Natl Acad Sci USA* 96:1268-1272
- Uitto J, Boyd CD, Lebowitz MG, Moshell AN, Rosenbloom J, Terry S (1998) International Centennial Meeting on Pseudoxanthoma Elasticum: progress in PXE research. *J Invest Dermatol* 110:840-842
- Uitto J, Pulkkinen L, Ringpfeil F (2001) Molecular genetics of pseudoxanthoma elasticum: a metabolic disorder at the environment-genome interface? *Mol Med Today* 7:13-17
- Uitto J, Shamban A (1987) Heritable skin diseases with molecular defects in collagen or elastin. *Dermatol Clin* 5:63-84
- Urbatsch IL, Sankaran B, Bhagat S, Senior AE (1995) Both P-glycoprotein nucleotide-binding sites are catalytically active. *J Biol Chem* 270:26956-26961
- van Soest S, Swart J, Tijmes N, Sandkuijl LA, Rommers J, Bergen AA (1997) A locus for autosomal recessive pseudoxanthoma elasticum, with penetrance of vascular symptoms in carriers, maps to chromosome 16p13.1. *Genome Res* 7:830-834
- Weenink AC, Dijkman G, de Meijer PH (1996) Pseudoxanthoma elasticum and its complications: two case reports. *Neth J Med* 49:24-29